



ST. JANE FRANCES DE CHANTAL PARISH & SCHOOL

ANNUAL REPORT FOR THE FISCAL YEAR (JULY 1, 2015 – JUNE 30, 2016)

Dear St. Jane Frances de Chantal Parishioners,

With development taking place all around Bethesda and Rockville at an unprecedented pace, the parish grounds are becoming an oasis of green space which we are fortunate to have and enjoy. Of course, the parish is much more than a park and tranquil setting. It is actually a hive of activity where we build community through the shared action and interests of groups for all ages. Here we find as well the refreshment we need for ourselves which comes to us from God as we pray, worship, study, and socialize. Your generous contributions week after week ensure that we have a beautiful, safe, and comfortable place for all that we do together and of which we can be justifiably proud.

In the pages of this report you will find a great deal of information about all that we accomplished together in the last year. It will also give you a picture of our financial obligations and the role each of us plays in making sure they can continue to take place by giving of our time, talent, and treasure. For all of these that you give I am truly grateful, and honored to be your pastor.

Gratefully yours,

Fr. Samuel Giese,

ST. JANE FRANCES DE CHANTAL PARISH CENSUS

	2014-2015	2015-2016
REGISTERED PARISHIONERS/FAMILIES	4989/1920	5576/1976
BAPTISMS	53	62
FIRST COMMUNIONS	94	84
CONFIRMATIONS	88	82
MATRIMONY	10	12
ANNOINTINGS OF THE SICK (INCLUDES SUBURBAN HOSPITAL)	973	780
FUNERALS	46	27

\$4,775

YOUTH COLLECTION
BENEFITS
YOUTH MINISTRY
ALTAR SERVERS

PASTOR'S PROJECTS

TV MONITOR IN
CRY ROOM TO
PARTICIPATE IN MASS

VOCATIONS

RUN FOR VOCATIONS
HOLY HOUR FOR
VOCATIONS
LENTE PRAYER TREE

YOUNG ADULTS

MONTHLY SPIRITUAL
& SOCIAL EVENTS;
POSTGRADUATE
SERVICE

300 COPIES

REDISCOVER
CATHOLICISM
LENTE BOOK
PROGRAM
WITH SUPPORT FROM
THE KNIGHTS OF
COLUMBUS

\$692.40

REBATE FROM THE
USED CLOTHING SHED
SINCE 1/1/16
BENEFITS
ST. MARTIN'S CLOAK
MSGR. CHRISTOPHER FUND
SCHOOL ENDOW. FUND
PASTOR'S PROJECTS

\$13,423

COMBINED FEDERAL CAMPAIGN
BENEFITS SCHOOL ENDOWMENT FUND
4X INCREASE OVER 2015

EAGLE SCOUT PROJECT

FIRE PIT BENEFITS
SCOUTS
YOUNG ADULTS
PARISH COMMUNITIES

See inside to learn about more parish programs.

You are invited to share your

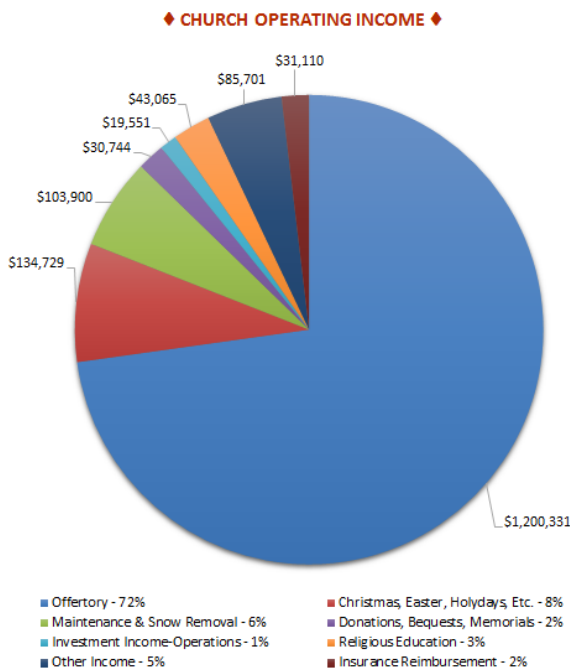
TIME ♦ TALENT ♦ TREASURE

Saturday & Sunday, September 24 & 25
after all the Masses, in Caulfield Hall

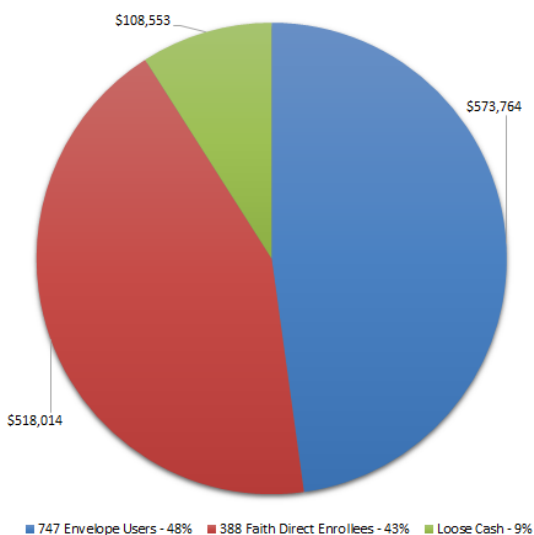
Share your time and talent through
Worship & Spiritual Growth
Education ♦ Faith Formation
Evangelization ♦ Family & Vocations
Parish Life ♦ Social Concerns ♦ Youth
Learn about giving opportunities.

Financial Highlights for the Parish

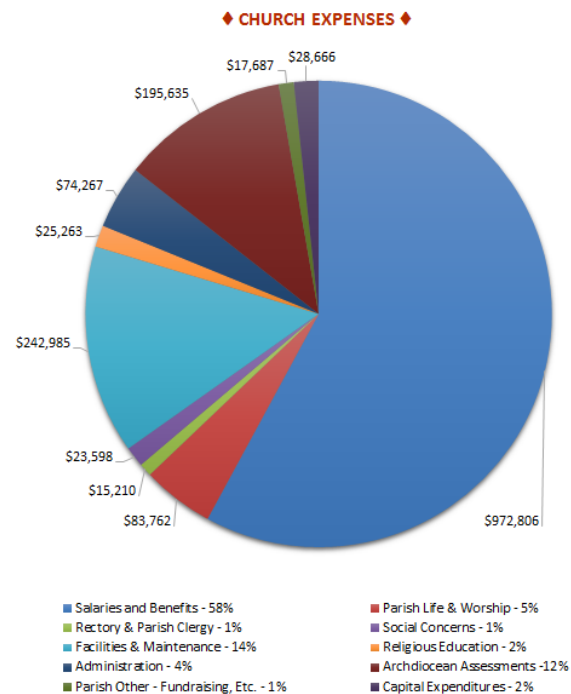
Parish operating revenue totaled \$1,678,637 collected from Offertory, Maintenance, Easter, Christmas, and other collections. This does not include market gain/losses on investments, but does include interest income on investments. **The first pie chart** below shows the dollars and percentage of each revenue source. **The second income pie chart** shows the amount and percentage of contributors that utilize Faith Direct and envelopes for the Offertory collections. *Offertory income from Faith Direct increased by \$44,000 over the prior year.* The amount of loose cash in the Offertory collection basket is also shown.



◆ OFFERTORY CONTRIBUTION COMPARISON ◆



The third pie chart shows the parish expenditures. Salaries and benefits of our priests and staff members are 58% of our expenses. The Archdiocese of Washington assesses our parish 15% on offertory and maintenance collections. Facilities and maintenance, combined with capital improvements, total 16% of our expenses. This expense includes cleaning contracts, utilities, insurance, building supplies, and projects that provide new function, repair damage, or replace obsolescent equipment. In the past 12 months some examples of this work have been parking lot improvements, tree cutting, new locks, roofing and gutter repair, church cabinet work, and other facility updating. Our capital expenditures totaled \$28,666. *Snow removal, including the January blizzard, cost \$14,233.* Damage from that blizzard totaled almost \$32,000 with our insurance covering \$31,110. This damage included roof tiles, gutters, and snow guards on multiple structures on our property. A few examples of other expenses include offering envelopes (\$9,052), Montgomery County solid waste charge (\$2,386), and the *Catholic Standard* parish assessment (\$20,939).



Many parts of our parish facilities are over 60 years old and our newest building projects have been operational over 15 years. We are now encountering more projects requiring replacement work due to break downs, obsolescence, and *new county regulations*. In preparation for Fall 2016 parish activities, we are presently installing three sinks (washing, rinsing, and sanitizing) in the Caulfield Hall kitchen in order to meet Montgomery County code. It is very important that our operational income collections keep up with the ever-increasing expenses of paying our employees--including benefits-- and properly maintaining our parish structures.

Parish Life: Liturgy & Music

“Faith grows when it is well expressed in celebration. Good celebrations foster and nourish faith.” Music ministry is an integral part of the liturgical celebrations of St. Jane’s. Just as Mother Church earnestly desires that all the faithful should be led to full, conscious, and active participation in liturgical celebrations rightly demanded by the very nature of liturgy, it also calls on individuals to participate in music ministry so that these celebrations may be enhanced. With the assistance of generous patrons, St. Jane’s Music Ministry is able to fulfill its mission: providing a wide array of musical programs and opportunities to people of all ages. Music Ministers at St. Jane’s live out their faith, give back to their parish, and answer God’s call to serve their neighbors.

The Second Vatican Council called the whole Church to reflect on the role of the laity in the Church. It reminded us that all Christians, by virtue of their baptism, are called to spread the gospel, to continue the work of building the Kingdom of God, and, most especially, to offer worship. St. Jane’s provides all parishioners with the opportunity to regularly celebrate vibrant, faith-enriching liturgy, and receive liturgical training, spiritual formation, and theological education. Liturgical ministers at St. Jane’s live out their faith, give back to their parish, and answer God’s call to serve their neighbors. *Submitted by Russell Weismann.*

STEWARDSHIP OF TREASURE	\$1,296 110,000 HOSTS \$1,513 216 BOTTLES OF WINE	\$3,680 2016 INCOME FOR PIPE ORGAN MAINTENANCE & CONCERT SERIES	STEWARDSHIP OF TIME & TALENT	4 CHOIRS	833 MASSES (DAILY & 5 WEEKEND)	19 USHERS	13 CANTORS
	\$4,456 VOTIVE CANDLES 2016 INCOME \$1,207 2016 EXPENSES			58 CHOIR MEMBERS	92 EXTRAORDINARY MINISTERS OF HOLY COMMUNION	126 ALTAR SERVERS	∞ COMMUNITY OUTREACH CONCERTS
	\$2,279 2016 MUSIC EXPENSES: SHEET MUSIC COPYRIGHT FEES SUPPLIES	\$484 ADULT CHOIR OPENING BANK BAL \$328 CLOSING BANK BAL		1 MUSIC LIBRARIAN	2 CHILDREN’S LITURGY OF THE WORD LEADERS	38 LECTORS	6 ALTAR GUILD MEMBERS EACH SPEND AN AVERAGE 3 HOURS A WEEK WASHING LINENS, WATERING FLOWERS, CHANGING CANDLES, POLISHING BRASS, ETC.

Religious Education

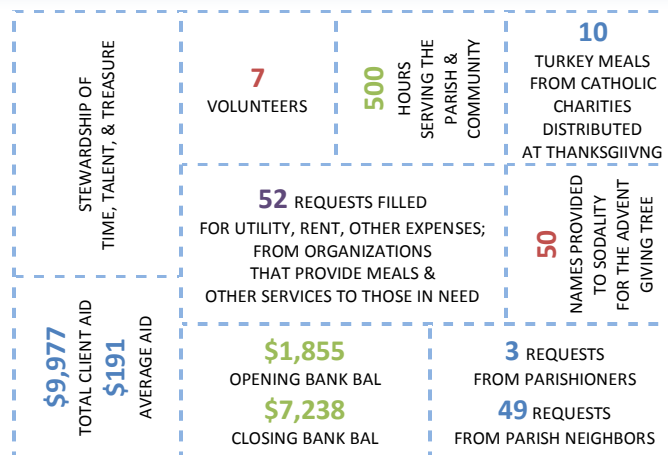
St. Jane’s Religious Education serves the needs of the religious instruction of children as well as adults. We have regular weekly religious education classes for children Pre-K through grade 12, RCIA, bible study, and parent sessions. Children are lead into a deeper relationship with Jesus as they learn about their faith in the weekly religious instructions being formed in the sacraments, scripture, morality, prayer, and Christian living. They learn under the guidance of wonderful volunteers who love to share their faith. Youth Ministry serves the needs of our high school

youth to socialize, stay connected to their parish, and grow in their faith. The students are given valuable lessons to help them grow into young adults. Volunteers make up the vast majority of our help in religious education and they are a valuable asset to our parish. Parent volunteers help in various ways: office help, coordinating the Christmas and end-of-year socials, ironing costumes, door monitors, and service outreach. Please, make some time to thank the volunteers who so generously help in religious education. *Submitted by Sally Daniel.*

STEWARDSHIP OF TREASURE	\$37,903 2015 INCOME	\$14,860 2015 NON-PAYROLL EXPENSE	STEWARDSHIP OF TIME & TALENT	80 REL. ED. JR. HIGH STUDENTS	10 VOLUNTEERS SERVING JUNIOR HIGH	16 HIGH SCHOOL YOUTH MINISTRY STUDENTS	3 VOLUNTEERS SERVING HIGH SCHOOL YOUTH MINISTRY
	\$43,065 2016 INCOME	\$25,263 2016 NON-PAYROLL EXPENSE		200 PARTICIPANTS IN ADULT EDUCATION INCLUDING BIBLE STUDY CHURCH HISTORY COURSES SACRAMENTAL PARENT MEETINGS	6 ADULT & 6 STUDENT VOLUNTEERS SERVING REL. ED. PRE-K	17 REL. ED. PRE-K STUDENTS AGES 3 & 4 (FOOT)	
	\$41,700 2017 INCOME BUDGET	\$24,700 2017 NON-PAYROLL BUDGET		176 FAMILIES	8 YOUTH & 3 ADULTS ATTENDED “ENCOUNTER THE GOSPEL OF LIFE” AT UMD	157 REL. ED. STUDENTS IN GRADES K-8	18 TEACHERS & AIDS SERVING REL. ED. GRADES K-8

St. Martin's Cloak

In the spirit of St. Martin, who tore his military cloak in half to share with a beggar, St. Martin's Cloak provides financial and other assistance to those in need, particularly those in our parish. Financial assistance is completely confidential and is funded through monthly Poor Box and Faith Direct collections, direct parishioner gifts, the Used Clothing Shed, the Knights of Columbus, and memorials. Long term problems are referred to community resources, such as Catholic Charities of the Archdiocese of Washington Parish Partners; Interfaith Works; the St. Vincent de Paul Society at St. Raphael Parish, Mother Seton Parish, and the Baltimore Council; and experts (legal, financial, etc.) in our own parish. *Submitted by Greg Storstrom.*

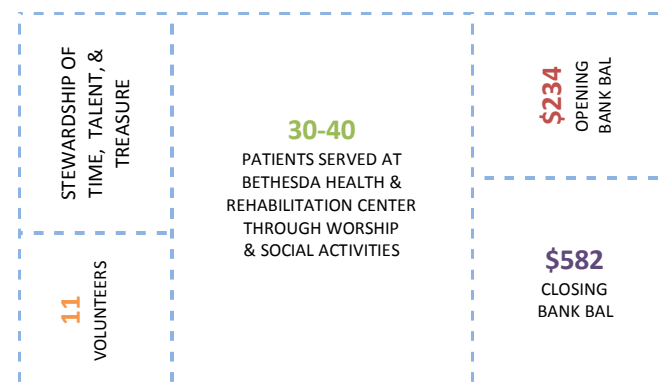
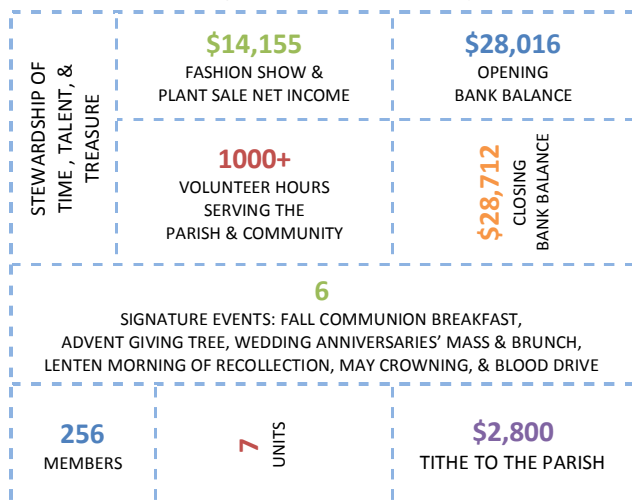


Sodality

In our 65th year as a parish organization, the St. Jane de Chantal Sodality Guild is committed to fostering a devotion to the Blessed Mother and the spiritual development of our members while serving our parish and community. Year round, the Sodalists, through their units and as the full guild, help our community, from arranging the parish blood drive to collecting requested items for local shelters and food banks, and making holiday décor for a local nursing home. The Sodality welcomes new members and invites all women of the parish to attend its functions. Annual fundraisers help to cover overhead for the various programs, including purchasing gifts for giving tree tags not returned, and underwriting most of the cost of the communion breakfast and the cost of the morning of recollection so these can be open to all women of the parish. Additionally, the Sodality conducts a scholarship essay contest to award a \$2,500 scholarship to a junior sodalist preparing to attend a Catholic high school. *Submitted by Liz Strand.*

Ladies of Charity

Ladies of Charity was founded by St. Vincent de Paul in 1617 to serve the poor and sick in Lyon, France. Today, nearing a four hundred year anniversary in 2017, the Ladies of Charity continue the mission "To Serve Rather Than Be Served." Ladies of Charity participate throughout the world in serving those less fortunate in the spirit of love and dignity. Here in the Archdiocese of Washington, LOC have 500 members. Ladies of Charity have been active in St. Jane de Chantal Parish since 1961. Over these many years we continue to make the Monday afternoon Mass, or Liturgy of the Word, and visits at the Bethesda Health and Rehabilitation Center the main focus of our mission, and host the yearly Christmas Party for the residents at the center. We generously support Birthright and St. Ann's Center for Children, Youth, and Families. We meet four times a year, and participate in the yearly archdiocesan LOC luncheon, May Day at St. Ann's Center, and the annual National LOC Assembly. *Submitted by Maryann Rooney.*

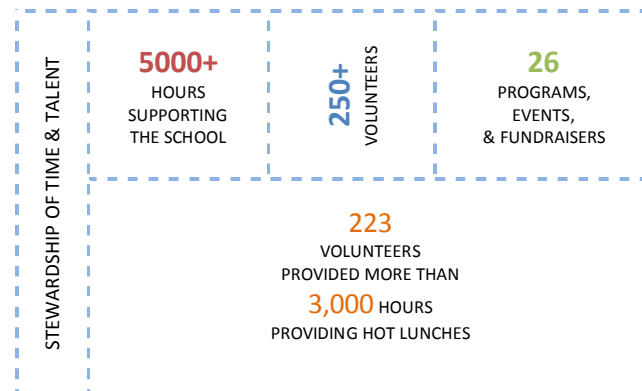
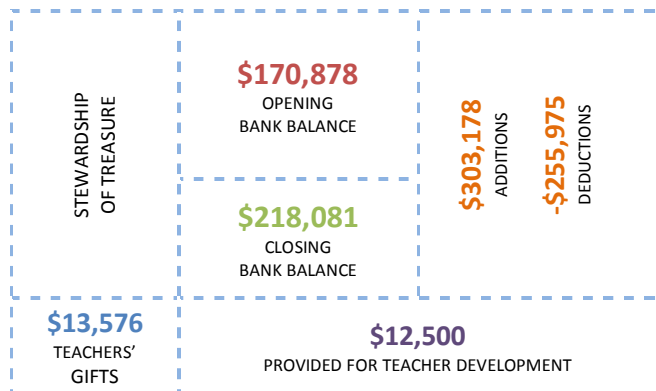


There are numerous other civic and neighborhood ministries for which many of our parishioners provide countless volunteer hours of service. The three organizations highlighted on this page are the ones that have bank accounts associated with our parish.

Home & School Association

One of the pillars of a school's organizational structure is the Home and School Association. This association has a long-standing tradition of seeking out a partnership with parents/caregivers and the school's administration. This collaborative effort assists the administration on reaching the objectives and goals associated with the mission of the school. Under the guidance of an Executive Board, the HSA directs and coordinates parental support through activities, social functions, and fundraisers; welcomes and integrates

new parents into the St. Jane de Chantal community; and provides forums for parent education. The HSA raises money through fundraisers such as the bi-annual Gala, bi-annual De Chantal Dash, Christmas Bazaar, Corn Hole Tournament, and numerous other events. The funds raised through these events go to a teachers' education fund, teachers' gifts, improvements to the school, and to offset the cost of some social events that bond the community. Large projects occur biannually and vary year-to-year based on the amount raised. *Submitted by Kelly Kelley.*



CYO

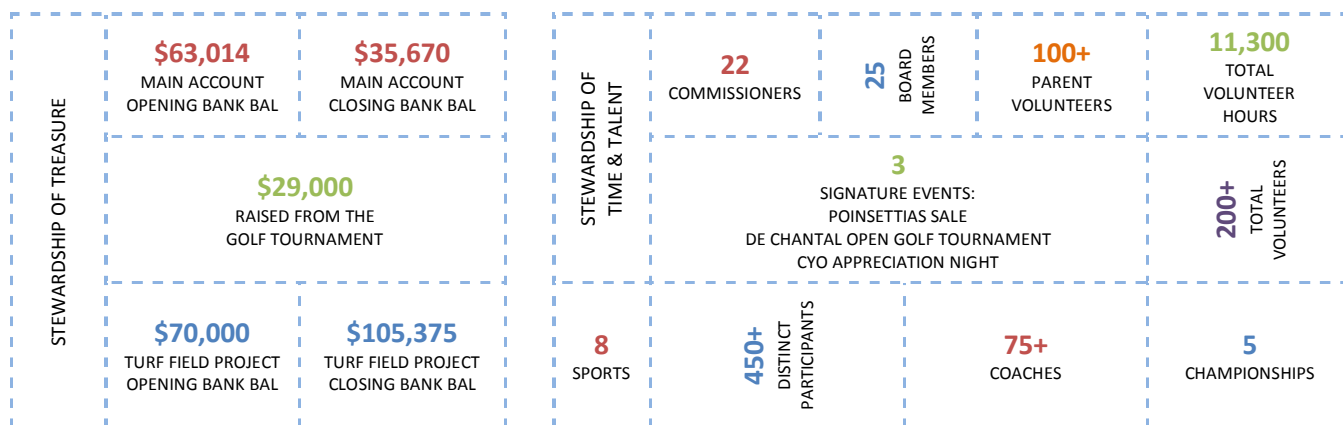
Sponsors athletic programs for all parish (parish and school) children from kindergarten through high school. "The purpose of CYO Athletics is to provide and promote recreational activity, which, by its nature will lead toward the development of Christian ideals in the youth served" (Archdiocese of Washington *CYO Athletic Handbook*).

Sources of income include: sports teams registration fees, Poinsettias Sale, De Chantal Open Golf Tournament, and the De Chantal Dash contribution from St. Jane H.S.A. to the Turf Field project.

Expenses include: sports teams registration fees to the Archdiocese of Washington CYO, equipment and uniforms, sports fields and basketball court permits, supplies for the T-Ball BBQ, poinsettia purchases, CYO Appreciation Night, and financial aid to players/families requiring assistance with fees.

Activities include: T-ball, cross-country, soccer, rugby, baseball, softball, track, and basketball.

CYO has contributed \$10,000 for playground improvements, and \$12,000 for initial engineering activities related to planning for a turf field. *Submitted by Mark Shaheen.*



St. Jane Frances de Chantal Parish & School
Fiscal Year Ending June 30

	2015 Prior FY	2016 Current FY	2017 FY Budget
Parish Operating Income			
Offertory Collections	\$1,208,672	\$1,200,331	\$1,220,000
Donations & Bequests	\$86,539	\$53,707	\$18,300
Forward in Faith	\$550	\$0	\$0
Investment Income-Operations Use	\$13,657	\$19,552	\$14,000
St. Louis Church & Board of Elections Donations	\$12,750	\$14,750	\$12,750
Religious Education	\$37,903	\$43,065	\$41,700
Christmas, Easter, Etc.	\$203,074	\$243,332	\$199,500
Maintenance Collections (Monthly) & Snow Collection	\$107,798	\$103,900	\$106,000
Subtotal Parish Operating Income	\$1,670,943	\$1,678,637	\$1,612,250
Change in Market Value & Investment Income	\$28,853	(\$3,720)	\$0
Total Parish Operating Income	\$1,699,796	\$1,674,917	\$1,612,250
Parish Expenses			
Salaries & Benefits	\$892,616	\$972,805	\$935,918
Parish Life & Worship	\$97,051	\$83,762	\$94,120
Rectory & Parish Clergy	\$17,668	\$15,210	\$14,500
Religious Education	\$14,860	\$25,263	\$24,700
Social Concerns	\$23,767	\$23,598	\$22,000
Administration & other	\$64,042	\$74,268	\$74,400
Facilities & Maintenance	\$253,177	\$242,985	\$233,900
Archdiocesan Assessments	\$223,521	\$195,635	\$198,900
Parish Other: Fundraising, Etc.	\$18,873	\$17,686	\$13,700
Total Parish Expenses	\$1,605,575	\$1,651,212	\$1,612,138
Net Parish Income	\$94,221	\$23,705	\$112
Other Uses of Funds			
Capital Improvements	\$76,029	\$28,666	\$0
Net Parish Income (Loss)	\$18,192	(\$4,961)	\$112
National Collections			
Collected & Remitted National Collections	\$70,206	\$56,004	
School Operating Income			
School Tuition (K-8)	\$2,589,150	\$2,461,294	\$2,653,880
Home & School Association Support	\$12,500	\$12,500	\$12,500
Msgr. Christopher Fund (Parish Collections)	\$28,645	\$20,073	\$17,000
Donations	\$7,834	\$23,090	\$9,000
Before/After School Care	\$184,320	\$188,843	\$150,000
Pre-K Tuition & Fees	\$142,480	\$288,555	\$297,000
Other Income: Fees, Programs, Etc.	\$542,933	\$506,045	\$375,400
Subtotal School Operating Income	\$3,507,862	\$3,500,400	\$3,514,780
Endowment Fund: Value Inc. & Investment Inc.	\$45,415	\$14,667	\$0
Total School Income	\$3,553,277	\$3,515,067	\$3,514,780
School Expenses			
Salaries & Benefits	\$2,704,524	\$2,796,073	\$2,877,253
Instruction	\$217,251	\$264,369	\$203,559
Facilities & Maintenance	\$374,031	\$347,982	\$314,600
Administration	\$148,776	\$149,500	\$115,739
Before/After Care & Pre-K (Non-payroll)	\$1,798	\$3,008	\$3,000
Total School Expenses	\$3,446,380	\$3,560,932	\$3,514,151
Net School Income (Loss)	\$106,897	(\$45,865)	\$629
Other Uses of Funds			
Capital Improvements	\$104,755	\$39,553	\$0
Net School Income (Loss)	\$2,142	(\$85,418)	\$629
School Endowment Fund Payment		\$39,500	
Deficit Covered by In-parish Donations		(\$45,918)	



St. Jane Frances de Chantal Church

9701 Old Georgetown Road
Bethesda, Maryland 20814-1795
Return Service Requested

Non-profit Organization

U.S. POSTAGE

PAID

BETHESDA, MARYLAND

Permit Number 0066

St. Jane Frances de Chantal Parish & School Giving Opportunities

Offertory Collection: Is used to fund the operating expenses of the parish, which includes paying the staff; paying our bills for utilities, supplies, etc.; sponsoring our programs; and covering normal maintenance such as cleaning our facilities.

Maintenance Collection: Is used to pay for major parish improvements, as well as major repairs that have developed over time. Since many parts of the parish are over 60 years in operation and the most recent additions are over 15 years in use.

Easter, Christmas, and Holy Day Collections: Are used in conjunction with the offertory collection to pay the operational expenses of the parish.

Msgr. Christopher Fund: Provides need-based scholarships to families in our school. During the 2015-2016 school year, the fund awarded over \$20,000 in financial assistance, which was received through Faith Direct, the Poor Box, and memorials.

School Endowment Fund: Contributed \$39,500 to the school to cover capital improvements. Please remember the St. Jane de Chantal School Endowment Fund (CFC # 32653) if you participate in the **Combined Federal Campaign**.

Saint Martin's Cloak: Provides financial and other assistance to parishioners and parish neighbors in need.

Poor Box: Is designated each week for a specific local charity. Cash or checks may be placed in one of the red containers located inside the main doors of church.

Methods of Giving: Contributions to the offertory, maintenance, Easter, Christmas, and holy day collections are received from: registered parishioners using weekly envelopes containing checks or cash; eGiving through Faith Direct—which supports credit/debit cards, direct bank withdrawals, and smartphone apps; unidentified cash and loose checks placed in the collection basket; and stock transfers, donor-advised funds, and IRA charitable contributions.

Memorial and Tribute Gifts: Memorial and tribute gifts can be designated for the parish, school, parish organizations, the Msgr. Christopher Fund, the School Endowment Fund, and Saint Martin's Cloak.

Gifts of Stock: Shares of appreciated stock or mutual fund shares may also be donated to the parish, school, and parish organizations by executing a stock transfer to a brokerage account in the name of St. Jane de Chantal Parish. To assure proper credit of your gift, notify the parish office in advance.

Planned Giving: To better understand a donor's wishes in leaving a bequest to St. Jane de Chantal Parish, it is important for the donor to contact the parish office and discuss with the pastor.