



Readings in *Worship* hymnal #1017

ENTRANCE ANTIPHON: LK 2: 16

The shepherds went in haste,
and found Mary and Joseph
and the Infant lying in a manger.

READING I: SIR 3:2-6, 12-14

The text offers traditional wisdom about
the way children should care for their
parents, but it concludes with the
promise that behavior toward parents
will be judged by God;
it shapes our union with God.

PSALM RESPONSE: PS 128

This wisdom psalm suggests that fidelity
to God will be rewarded in a happy
family life. While this does not always
seem to come true, it points out the
more basic belief that our faith is
connected to our daily behavior.

READING II: COL 3:12-21

After a set of basic instructions on how
to behave as believers and within the
community, Paul tells wives to
“be subordinate.” This was routine advice
in his time. The next piece of advice—
“Husbands, love your wives”—was not
routine, because wives were only
slightly better off than slaves or small
children in that society. Paul, in effect,
was trying to blindside Christian men
into a new way of behavior.

GOSPEL: MT 2:13-15, 19-23

Matthew is explaining why Jesus,
born in Bethlehem and thought to be
a descendant of David, wound up living
in Nazareth and saying nothing about his
royal connections. On a human level,
it was the fear of the Herodian dynasty
that caused this, but even that fearful
decision fulfilled the prophecies.

COMMUNION ANTIPHON: BAR 3: 38

Our God has appeared on the earth,
and lived among us.

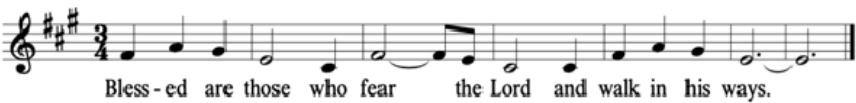
THE ORDER OF WORSHIP
FOR THE FEAST OF THE HOLY FAMILY
OF JESUS, MARY, AND JOSEPH / YEAR A

Prelude*Joseph est bien marié* | Claude-Bénigne Balbastre (1724 — 1799)
(Sun. 5 pm) *Child of the Poor/What Child Is This* | Scott Soper/Traditional

Entrance Hymn *Angels We Have Heard on High* | #417
(Sun. 5 pm) *Angels We Have Heard on High* | #417

Gloria from *Mass in Honor of Saint Ignatius* | inside hymnal back cover
(Sun. 5 pm) from *Storrington Mass* | #257

Responsorial PsalmPsalm 128: *Blessed are those* | Luke Mayernik



Refrain © 1969, 1981, 1997, International Commission on English in the Liturgy Corporation.
Music © 2017, Birnamwood Publications, a division of MorningStar Music Publishers, Inc.
All rights reserved. Reprinted under OneLicense.net A-727505.

Gospel Acclamation *Festival Alleluia* | #335

Preparation of the Gifts *Once In Royal David’s City* | #440
(Sun. 10 am) *The Blessed Son of God* from *Hodie* | Ralph Vaughan Williams (1872 – 1958)
(Sun. 5 pm) *Come, Sing a Home and Family* | #439

Preface Acclamation*Holy* from *Mass for the City* | #374
(Sun. 5 pm) *Holy* from *Storrington Mass* | #260

Memorial Acclamation *When we eat this bread* from *Mass for the City* | #375
(Sun. 5 pm) *We proclaim your death* from *Storrington Mass* | #261

Great Amenfrom *Mass for the City* | #376
(Sun. 5 pm) from *Storrington Mass* | #264

Fraction Rite *Lamb of God* | #382
(Sun. 5 pm) *Lamb of God* from *Storrington Mass* | #265

Communion Procession *God Rest You Merry, Gentlemen* | #420
(Sun. 5 pm) *The First Nowell* | #449

Hymn of Thanksgiving (Sun. 10) *Psallite unigenito* | Michael Praetorius (1571 – 1621)
Midnight Clear (Love Song) | Chris Tomlin (b. 1972)

Concluding Hymn*Angels, from the Realms of Glory* | #425
(Sun. 5 pm) *Hark! The Herald Angels Sing* | #414

Postlude*God Rest You Merry, Gentlemen* | Wilbur Held (1914 – 2015)

CHORAL TEXTS AND TRANSLATIONS

The Blessed Son of God.....Ralph Vaughan Williams

The blessed son of God only
In a crib full poor did lie;
With our poor flesh and our poor blood
Was clothed that everlasting good.
Kyri'eleison.

The Lord Christ Jesu, God's son dear,
Was a guest and a stranger here;
Us for to bring from misery,
That we might live eternally.
Kyri'eleison.

All this did he for us freely,
For to declare his great mercy;
All Christendom be merry therefore,
And give him thanks for evermore.
Kyri'eleison.

(Miles Coverdale, trans., after Martin Luther)

Psallite unigenito Michael Praetorius

*Psallite, unigenito
Christo Dei Filio, Christo Dei Filio,
Redemptori Domino, puerulo,
iacenti in praesepio.*

Sing your psalms to Christ,
the only begotten Son of God,
sing your psalms to the Redeemer.

*Ein kleines Kindelein liegt in dem Krippelein;
Alle liebe Engelein dienen dem Kindelein,
und singen ihm fein,*

A small Child lies in the manger;
All the blessed angels serve Him
and sing to Him.

*Psallite, unigenito
Christo Dei Filio, Christo Dei Filio,
Redemptori Domino, puerulo,
iacenti in praesepio.*

Sing your psalms to Christ,
the only begotten Son of God,
sing your psalms to the Redeemer.

(from *Musae Sioniae*, 1609)

IN OUR PARISH

*Can't find the bulletin you brought home from church?
Want to keep up on what's happening in the parish
even when you are away on vacation or sick in bed?
Visit our parish website, www.stjanedechantal.org
to view a copy of the bulletin and for more information on
parish events and organizations.*

WELCOME NEW PARISHIONERS

St. Jane de Chantal Parish welcomes those who have

recently registered in our parish. If you attend Mass at St. Jane Frances de Chantal regularly, we encourage you to register as a member. Please complete a registration form and drop it in the collection basket when you attend Mass.

SNOW POLICY FOR WEEKDAY MASSES

If the Federal Government is closed due to inclement weather, St. Jane de Chantal will not hold the 8:30 am weekday Mass. Please stay safe at home, and allow our snow removal crews to clear and treat our parking lots and walkways. If the Federal Government is opening on a delayed schedule, we will hold the 8:30 am Mass.

* RECURRING MAINTENANCE EXPENSES

MOCO Fees	\$140.00
Pest Control	\$458.00
Landscaping	\$674.00
Elevator Maintenance.....	\$868.00
ADW Asbestos Mgmt Plan Fee	\$1,090.00
Fire Protection Services	\$1,240.00
Cleaning Services	\$9,773.00
Total Recurring Expenses.....	\$14,243.00

* Recurring expenses include those billed monthly, quarterly, semi-annually, and annually.

EXTRAORDINARY MAINTENANCE EXPENSES

Sign Repair	\$576.00
Sound System Equipment.....	\$589.00
Cleaning Services	\$750.00
Floor Tile Installation	\$1,000.00
Rental Equipment	\$1,751.00
IT Equipment & Installation	\$4,776.00
Total Extraordinary Expenses	\$9,442.00

Total Expenses 11/15/2019 - 12/11/19\$23,685.00

MAINTENANCE COLLECTION
NEXT WEEKEND, JANUARY 4/5

JUST LIKE YOURS, PARISH BILLS GO UP IN THE WINTER



HELP ST. JANE KEEP UP WITH WINTER EXPENSES
THROUGH SUPPORT OF OUR MONTHLY MAINTENANCE COLLECTION.

The second collection next weekend will be our monthly collection to help with the repair and maintenance of our parish facilities. The Maintenance Collection in December (as of 12/15/) totaled \$8,867.00. **THANK YOU!**

VOLUNTEER CERTIFICATION UPDATE

The Archdiocese of Washington Child Protection Program requires volunteers who have not been fingerprinted, as part of an ADW criminal background report, to be fingerprinted by January 30, 2020. To assist with this process, St. Jane de Chantal Parish and School are offering an opportunity for volunteers to complete the volunteer certification process by hosting a LiveScan Fingerprinting on Saturday, January 11, 10:00 am to 1:00 pm, in Caulfield Hall. LiveScan will send criminal background reports directly to ADW Child Protection. Pre-registration is required: step one - schedule an appointment at www.signupgenius.com/go/409084DADAF22A3F49-adwlivescan; step two - pre-register with Safe Hire Solutions at <https://secure.safehiresolutions.com/livescan-pre-registration-application/>. Cost is \$55 per person; checks payable to Safe Hire Solutions or cash (no credit cards accepted).

BIBLE STUDY: 1 CORINTHIANS

Make reading the Bible one of your New Year's Resolutions! It is much more fun and easier than exercising or losing weight. Join us as we begin a study on the New Testament book, 1 Corinthians, Sunday nights, 6:15-8:15 pm, beginning January 12 in the Seton Center Library. The Ascension Press study materials are \$26.95. Sign up after Mass December 28/29 or January 4/5, or contact Kim and Peter Williamson, kcprwilliamson@gmail.com, for more information.

SAINT MARTIN'S CLOAK GUILD

In the spirit of St. Martin of Tours, who tore his military cloak in half and gave it to another who was in need, the St. Martin's Cloak Guild at St. Jane de Chantal Parish provides financial and other assistance to those in need, especially those in our own parish. Financial assistance is completely confidential and is funded through parishioners' monthly Poor Box donations, Faith Direct collections, and other private donations. We also execute a weekly food delivery service, collecting fresh food donated by nearby grocers and distributing to Mother Teresa's Missionaries of Charity, So Others Might Eat (SOME), and two seminaries forming our next generation of priests. In addition, we have organized specialty drives in the parish collecting blankets, backpacks, and toiletries for the seasonal needs of those least fortunate in our community. If you are interested in joining our ministry of assistance, contact the Chair, Paul Eder, at 301-956-6273.

FROM OUR GREEN COMMITTEE: THOUGHTFUL RECYCLING

Perhaps you have become more sensitive recently to the ways our actions affect our environment and you'd like to

recycle more. Many people have questions about what can be recycled and what can't be. Use this web site for information: <https://www2.montgomerycountymd.gov/DepHowDoI/search.aspx>. It is vital to understand the proper disposal of plastic bags. Never place plastic bags into your recycling blue bin. Watch this you-tube video to help you understand the importance of this issue: <https://www.youtube.com/watch?v=vIYLnHQ9peM>. Remember the rule of thumb: "when in doubt, keep it out." Take all of your plastic bags to grocery stores for recycling. Keep reusable bags handy to cut down on your use of plastic bags.

REMEMBER IN PRAYER

. . . those who are sick, and all those in our nursing homes and hospitals, especially John and Pat Krisko, Pierre Benjamin, and Leonard Moreno.

. . . those who have died, especially William Battaile.

IN OUR LITURGY & MUSIC MINISTRIES

Visit the Music Ministries page at www.stjanedechantal.org/ministries/music-ministry for information on the many music ensembles at St. Jane.

IN OUR FAITH FORMATION PROGRAMS

Visit the Faith Formation page at www.stjanedechantal.org for information on the various programs, registration forms and calendars.

IN OUR BLUE RIBBON SCHOOL

Check out the St. Jane de Chantal School website at www.dechantal.org to get information on admissions, see what each classroom is studying, and more.

SCHOOL OPEN HOUSE

If you are thinking of Catholic education for your children, come to visit our school. St. Jane de Chantal has been educating children since 1953 and is now recognized as a vibrant 21st century Catholic school. Our faculty is dedicated to instilling and nurturing a deep religious foundation in our children. With a commitment to strong academics in core subjects of religion, math, language arts, science and history/social studies, teachers include cooperative learning and problem solving into all lessons. Students utilize Chrome books, Google Classroom, and iPads, along with textbooks across all academic disciplines. Teachers also pique student curiosity through field trips, guest speakers, and visual arts and music. Each school



The priests and staff of St. Jane de Chantal Parish
wish to thank all who sent greetings
and brought delicious gifts to the parish office this Christmas.
May the heaven-born Prince of Peace reward your kindness
and keep you in His care throughout the New Year.



year, many students participate in one of more of the De Chantal fine arts programs; band, choir, dance, and theater. The science STEM Initiative is complimented by our annual March Science Madness program which involves students in all grades. Mark your calendar and plan to visit St. Jane de Chantal School on Monday, January 27, between 9:00 and 11:00 am. You will tour all classrooms pre-K to grade 8, and meet teachers, students, and parents. Applications for the 2020-21 school year will be available.

IN OUR ARCHDIOCESE

For more information on vocations, education, family, youth, social concerns, & other events in the Archdiocese of Washington, visit www.adw.org. The website also has a media center, which includes social media tools, a YouTube channel, and apps.

MEN'S DISCERNMENT RETREAT

The Vocations office of the Archdiocese of Washington invites men in their 20's – 40's, who are interested in learning more about the priesthood, to attend a discernment retreat at Saint John Paul II Seminary, January 31 — February 2, 2020. The retreat will be an opportunity to pray and reflect on God's call, meet priests and seminarians, hear their stories, and learn more about the seminary and priesthood. Registration will open soon at www.dcpriest.org. If you have any questions, contact the Office of Priest Vocations at vocations@adw.org or 202-636-9020.

STEWARDSHIP

*Joseph's obedience to God was not a one-time thing.
His attention to the angel's warning
kept Jesus from being murdered by Herod
and led to the fulfillment of the prophecy
that the Messiah would be a Nazorean.
Fidelity to God's will assures
the best use of my talents, too!*

Poor Box

The Poor Box next weekend, January 4/5, will benefit the Monsignor Christopher Fund, which provides need-based scholarships to our parish school.

TAX DEDUCTIBLE CONTRIBUTIONS

You can deduct your contributions to St. Jane de Chantal only in the year you actually make them. You make a contribution at the time of its unconditional delivery, e.g., in the Sunday collection basket. When a check is mailed, the IRS considers the U.S. Mail postmark to be the delivery date [see IRS Publication 526 and U.S. Treasury Regulation 1-170A-1(b)]. Contributions for the 2019 calendar year must have a U.S. Mail postmark dated no later than December 31, 2019. The date on the check has no consequence. For example, if we receive a check dated December 31, 2019 with a U.S. Mail postmark of January 2, 2020, the contribution will be credited to the 2020 calendar year. Contributions by credit card or bank debit through Faith Direct are deductible in the year you make the charge. Contributions by stock delivered electronically through a financial services firm are considered to be made when the stock is delivered to our broker.

CHRISTMAS & YEAR-END GIFTS

Faith Direct, our eGiving vendor, makes it easy to make your Christmas gift and year-end contributions, as well as catch-up on missed contributions, to St. Jane de Chantal Parish by credit card or bank debit. Visit <https://membership.faithdirect.net/givenow/30>.

COMBINED FEDERAL CAMPAIGN # 32653

Please remember the St. Jane de Chantal School Endowment Fund (CFC # 32653) if you participate in this charitable campaign. The campaign season ends January 12, 2020.

5 WAYS TO GIVE	to St. Jane de Chantal Church:	
	ENVELOPES CALL THE PARISH OFFICE TO REQUEST ENVELOPES	RECURRING THROUGH FAITHDIRECT.NET OR YOUR BANK'S BILL PAY
ONLINE VISIT FAITHDIRECT.NET TO MAKE A ONE-TIME GIFT	TEXT-TO-GIVE TEXT \$ AMOUNT TO 301-485-5127	MAIL 9701 OLD GEORGETOWN RD BETHESDA MD 20814-1795



ATTENTION "SNOWBIRDS"

As you head south for the winter, we hope your pre-trip to-do lists include something beyond packing shorts and golf clubs.

At the top of your list should be signing up for *Faith Direct*. Join the many parishioners who have enrolled in *Faith Direct* for automated giving to St. Jane Frances de Chantal Parish.

Faith Direct is secure and convenient, and requires very little lead-time if you need to adjust your contribution amounts.

There is no cost to you, and the program ensures a consistent source of donations for our parish.

Sign up today by visiting www.faithdirect.net. Our parish code is MD30.

You can also pick up an enrollment form at the parish office, or call, toll-free, 1-866-507-8757, for more information.



**THE SOLEMNITY OF THE
BLESSED VIRGIN MARY
THE MOTHER OF GOD**

January 1
8:30 am ♦ 10:00 am

PARISH CALENDAR

Sunday, December 29, 2019 – Saturday, January 4, 2020
For all upcoming events, visit www.stjanedechantal.org, "Complete Parish Calendar."

C = Church ♦ CH = Caulfield Hall ♦ CGS = Gathering Space ♦ CLL = Church Lower Lobby
CRH = Christopher Hall ♦ SMR = Scanlan Meeting Room ♦ DCR = De Chantal Room
MR = Music Room ♦ NMR = Nalls Meeting Room ♦ RBR = Rectory Board Room
SCH = School ♦ SC = Seton Center for Religious Education
AF = Athletic Field ♦ PG = Parish Grounds

SUNDAY, DECEMBER 29**MONDAY, DECEMBER 30****TUESDAY, DECEMBER 31**

7:00 pm Scripture Study: Acts SC

WEDNESDAY, JANUARY 1**THURSDAY, JANUARY 2**

7:00 pm Boy Scout Troop 461 DCR/NMR

7:30 pm Choir MR

7:30 pm Green Committee SMR

FRIDAY, JANUARY 3**SATURDAY, JANUARY 4**

6:30 am Men's First Saturday Fellowship CH

9:30 am SPRED Prayer Service K of C

7:30 pm Parish of St. Louis Social CH

POPE FRANCIS

"May the Virgin Mary help us so that we do not allow ourselves to be distracted by external things, but make room in our hearts for the One who has already come and wants to come again to heal our illnesses and to give us his joy."

@Pontifex

READINGS**Jan. 5**

Reading I
Is 60:1-6

Reading II
Eph 3:2-3A, 5-6

Gospel
Mt 2:1-12

INTENTIONS**Sun., Dec. 29 – Sat., Jan. 4**

Sunday	8:00 am	Parishioners
	10:00 am	Ernest Kung/D
	12:00 pm	Rey Bald/D
	5:00 pm	David Yockel/D
Monday	8:30 am	Eduardo Lee/D
Tuesday	8:30 am	John Paul Royston/D
Wednesday	8:30 am	Joseph Park/D
	10:00 am	Chuck Covell/D
Thursday	8:30 am	Rosemary Jones/D
Friday	8:30 am	Anthony Lee/L
Saturday	8:30 am	Special Intentions
	5:00 pm	Stephen Mooney/D

ALTAR SERVERS**Mon., Dec. 30 – Sun., Jan. 5**

Monday	8:30 am	C. Johnson, L. Varanelli
Tuesday	8:30 am	R. Hutko, L. Jana
Wednesday	8:30 am	S. Townsend, 2 volunteers needed
	10:00 am	K. Dinh, B. Harman, P. Harman
Thursday	8:30 am	R. Pablo, A. Rhea
Friday	8:30 am	K. Aquino, J. McKinnon
Saturday	8:30 am	N. Sissoko, S. Stancik
	5:00 pm	G. LaCount, N. LaCount, J. Lee
Sunday	8:00 am	M. Ojo, B. Relacion, L. Varanelli
	10:00 am	J. Connors, M. Connors, K. Patterson
	12:00 pm	B. Harman, P. Harman, J. Maxwell
	5:00 pm	R. Hutko, S. Miller, L. Owens