



### Readings in *Worship* hymnal #1010

#### ENTRANCE ANTIPHON: IS 45:8

Drop down dew from above, you heavens,  
and let the clouds rain down the Just One;  
let the earth be opened  
and bring forth a Savior.

#### READING I: IS 7:10-14

In its original context, this text expressed  
the hope of the prophet that a child born  
to the royal house of David would be  
the kind of king who would create  
the messianic age.

#### PSALM RESPONSE: PS 24

A hymn of praise to God the creator.  
Who can enter the Jerusalem Temple  
to stand before the creator?  
Only those who are without sin,  
who are fully devoted to God.

#### READING II: ROM 1:1-7

In the process of introducing himself  
to the Christian community at Rome,  
Paul summarizes the early Christian creed  
that Jesus fulfilled the prophetic teaching  
about a messiah and that he came from  
David's royal line "according to the flesh."

By his resurrection he was  
"established as Son of God in power."

#### GOSPEL: MT 1:18-24

Mary doesn't have a lot to do  
in this reading: She is presented as  
having already accepted the action  
of God—her pregnancy "through the  
Holy Spirit." The focus is really on  
how Joseph will react to her pregnancy.  
God helps Joseph by a dream, in which  
the angel quotes a key text from today's  
first reading. But the decision is still  
Joseph's. When he awakens, he must  
trust in his dream—and in Mary—  
in order to fulfill God's plan.

#### COMMUNION ANTIPHON: IS 7:14

Behold, a Virgin shall conceive  
and bear a son;  
and his name will be called Emmanuel.

## THE ORDER OF WORSHIP FOR THE FOURTH SUNDAY OF ADVENT / YEAR A

Prelude ..... *Magnificat noni toni*, BuxWV 205 | Dietrich Buxtehude (c.1637 — 1707)  
(Sun. 5 pm) *Prepare! Prepare!* | Stephen Pishner (b. 1965)

Entrance Hymn ..... *O Come, O Come, Emmanuel* | #386  
(Sun. 5 pm) *O Come, O Come, Emmanuel* | #386

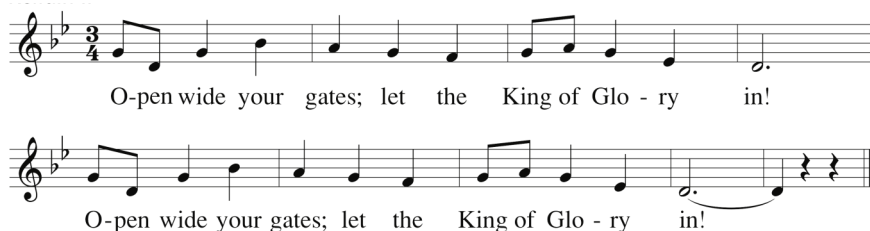
Penitential Act ..... from *Mass in Honor of Saint Ignatius* | inside hymnal back cover  
(Sun. 5 pm) from *Black Mountain Liturgy* | #266

Responsorial Psalm ..... Psalm 24: *Let the Lord enter* | Luke Mayernik



Refrain © 1969, 1981, 1997, International Commission on English in the Liturgy Corporation.  
Music © 2017, Birnamwood Publications, a division of MorningStar Music Publishers, Inc.  
All rights reserved. Reprinted under OneLicense.net A-727505.

(Sun. 5 pm) Psalm 24: *Open wide your gates* | Kevin Keil



Tune: Kevin Keil © 1993, GIA Publications, Inc. Text: Kevin Keil © 1993, GIA Publications, Inc.  
All rights reserved. Reprinted under OneLicense.net A-727505.

Gospel Acclamation ..... *Alleluia* | Robert Twynham



© 1958, World Library Publications. All rights reserved. Reprinted under OneLicense.net A-727505.

(Sun. 5 pm) from *Mass of Creation* | Marty Haugen

Preparation of the Gifts ..... *The Angel Gabriel* | #875  
(Sun. 10 am) *Maria Walks Amid the Thorn* | David Ashley White (b. 1944)  
(Sun. 5 pm) *My Soul in Stillness Waits* | #404

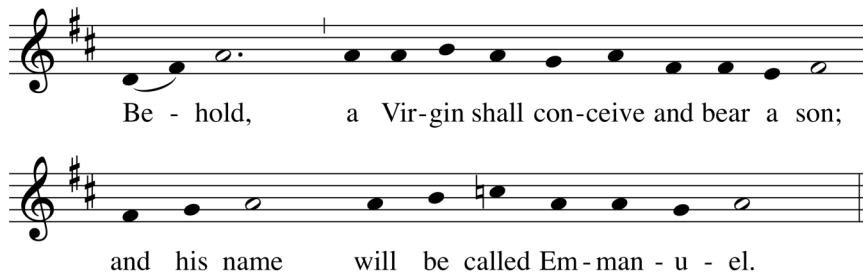
Preface Acclamation ..... *Sanctus* from *Cantus Missae* | #304  
(Sun. 5 pm) *Holy* from *Mass of Creation* | #365

Memorial Acclamation ..... *We proclaim* from *Mass for Saint Ignatius* | hymnal back cover  
(Sun. 5 pm) *When we eat this bread* from *Mass of Creation* | #366

Great Amen ..... from *Mass for Saint Ignatius* | inside hymnal back cover  
(Sun. 5 pm) from *Mass of Creation* | #367

Fraction Rite ..... *Agnus Dei* from *Cantus Missae* | #311  
(Sun. 5 pm) *Lamb of God* from *Mass of Creation* | Marty Haugen

Communion Procession .....Is 7:14: *Behold, A Virgin Shall Conceive* | Russell Weismann



The English translation of the Psalm Response from the Lectionary for Mass. © 1969, 1981, 1997, International Commission on English in the Liturgy Corporation. Music © 2014 by GIA Publications, Inc. All rights reserved. Reprinted under OneLicense.net A-727505.

(Sun. 5 pm) *O Come, O Come, Emmanuel* | #386

Hymn of Thanksgiving ..... (Sun. 10) *Virgin-born* | James Chepponis (b. 1956)

Marian Antiphon ..... *Alma Redemptoris Mater*



Concluding Hymn..... *Savior of the Nations, Come* | #388

(Sun. 5 pm) *People, Look East* | #398

Postlude..... *Savior of the Nations, Come* | Paul Manz (1919 – 2009)

## CHORAL TEXTS AND TRANSLATIONS

### *Maria Walks Amid the Thorn*

Maria walks amid the thorn,  
*Kyrie Eleison.*  
Maria walks amid the thorn,  
Which seven years no leaf has boun.  
Jesus and Maria.

What in her heart doth Mary bear?  
*Kyrie Eleison.*  
A little child doth Mary bear,  
Beneath her heart, He nestles there.  
Jesus and Maria.

And as the two are passing near,  
*Kyrie Eleison.*  
Lo, roses on the thorn appear!  
Jesus and Maria.

(Anonymous, 16th century)

### *Virgin-born, We Bow Before You*

Virgin-born, we bow before thee;  
blessèd was the womb that bore thee;  
Mary, mother meek and mild,  
blessèd was she in her child.  
Blessèd was the breast that fed thee;  
blessèd was the hand that led thee;  
blessèd was the parent's eye  
that watched thy slumbering infancy.  
Blessèd she by all creation,  
who brought forth the world's Salvation,  
blessèd they for ever blest,  
who love thee most and serve thee best.  
Virgin-born we bow before thee;  
blessèd was the womb that bore thee;  
Mary, mother meek and mild,  
blessèd was she in her child.

(Reginald Heber, 1783 – 1826)

## IN OUR PARISH

*Can't find the bulletin you brought home from church?  
Want to keep up on what's happening in the parish  
even when you are away on vacation or sick in bed?  
Visit our parish website, [www.stjanedechantal.org](http://www.stjanedechantal.org)  
to view a copy of the bulletin and for more information on  
parish events and organizations.*

### WELCOME NEW PARISHIONERS

St. Jane de Chantal Parish welcomes those who have recently registered in our parish. If you attend Mass at St. Jane Frances de Chantal regularly, we encourage you to register as a member. Please complete a registration form and drop it in the collection basket when you attend Mass.

### SNOW POLICY FOR WEEKDAY MASSES

If the Federal Government is closed due to inclement weather, St. Jane de Chantal will not hold the 8:30 am weekday Mass. Please stay safe at home, and allow our snow removal crews to clear and treat our parking lots and

walkways. If the Federal Government is opening on a delayed schedule, we will hold the 8:30 am Mass.

### CHRISTMAS EVE GOSPEL REENACTMENT

It's that time! We are looking to recruit several kindergarten through fifth graders to play in our 4:00 pm Christmas Eve Mass gospel reenactment. Costumes and rehearsal will be provided! Roles of Mary, Joseph and Angel Gabriel will be assigned by lottery. Please make sure your child has a second choice of part if their name is not chosen in the lottery. If your child does not want to be in the lottery, he/she can choose to be an angel or a shepherd. We also have roles for a couple of animals. Rehearsal will be at 9:30 am this Monday, December 23 (schools are off for break). To RSVP for your spot, email Mark Diamond at [mark.diamond@stjanedechantal.org](mailto:mark.diamond@stjanedechantal.org).

### VOLUNTEER CERTIFICATION UPDATE

The Archdiocese of Washington Child Protection Program requires volunteers who have not been fingerprinted, as part of an ADW criminal background report, to be

fingerprinted by January 30, 2020. To assist with this process, St. Jane de Chantal Parish and School are offering an opportunity for volunteers to complete the volunteer certification process by hosting a LiveScan Fingerprinting on Saturday, January 11, 10:00 am to 1:00 pm, in Caulfield Hall. LiveScan will send criminal background reports directly to ADW Child Protection. Pre-registration is required: step one - schedule an appointment at [www.signupgenius.com/go/409084DADAF22A3F49-adwlivescan](http://www.signupgenius.com/go/409084DADAF22A3F49-adwlivescan); step two - pre-register with Safe Hire Solutions at <https://secure.safehiresolutions.com/livescan-pre-registration-application/>. Cost is \$55 per person; checks payable to Safe Hire Solutions or cash (no credit cards accepted).

### BIBLE STUDY: 1 CORINTHIANS

Make reading the Bible one of your New Year's Resolutions! It is much more fun and easier than exercising or losing weight. Join us as we begin a study on the New Testament book, 1 Corinthians, Sunday nights, 6:15-8:15 pm, beginning January 12 in the Seton Center Library. The Ascension Press study materials are \$26.95. Sign up after Mass December 28/29 or January 4/5, or contact Kim and Peter Williamson, [kcprwilliamson@gmail.com](mailto:kcprwilliamson@gmail.com), for or more information.

### EMAIL SCAM WARNING

Please be aware that there is a email scam circulating that uses religious leaders as a ploy to scam you into sending money or buy gift cards. Fr. Giese's name is being used in one of them; these emails are not coming from Fr. Giese. St. Jane de Chantal Parish receives online donations only through our e-giving provider, Faith Direct. All St. Jane de Chantal emails have details that identify us and the purpose of the email. If the sender did not put enough recognizable details in an email for you to be comfortable with its origin and purpose, do not respond.

### REMEMBER IN PRAYER

... those who are sick, and all those in our nursing homes and hospitals, especially John and Pat Krisko, Pierre Benjamin, and Leonard Moreno.

... those who have died, especially Fitzhugh Mullan.



### IN OUR LITURGY & MUSIC MINISTRIES

Visit the Music Ministries page at [www.stjanedechantal.org/ministries/music-ministry](http://www.stjanedechantal.org/ministries/music-ministry) for information on the many music ensembles at St. Jane.

### IN OUR FAITH FORMATION PROGRAMS

Visit the Faith Formation page at [www.stjanedechantal.org](http://www.stjanedechantal.org) for information on the various programs, registration forms and calendars.

### IN OUR BLUE RIBBON SCHOOL

Check out the St. Jane de Chantal School website at [www.dechantal.org](http://www.dechantal.org) to get information on admissions, see what each classroom is studying, and more.

### ANNUAL CHRISTMAS PLAY

On December 11, the lower school performed their annual Christmas Play for the students and families of De Chantal. Pre-kindergarten through fourth grade performed their special parts in the play based on the Nativity Christmas story. Songs sung by the children reminded us all to create peace in the world and live out our mission as Catholics.

### SCHOOL OPEN HOUSE

If you are thinking of Catholic education for your children, come to visit our school. St. Jane de Chantal has been educating children since 1953 and is now recognized as a vibrant 21st century Catholic school. Our faculty is dedicated to instilling and nurturing a deep religious foundation in our children. With a commitment to strong academics in core subjects of religion, math, language arts, science and history/social studies, teachers include cooperative learning and problem solving into all lessons. Students utilize Chrome books, Google Classroom, and iPads, along with textbooks across all academic disciplines. Teachers also pique student curiosity through field trips, guest speakers, and visual arts and music. Each school year, many students participate in one of more of the De Chantal fine arts programs; band, choir, dance, and theater. The science STEM Initiative is complimented by our annual March Science Madness program which involves students in all grades. Mark your calendar and plan to visit St. Jane de Chantal School on Monday, January 27, between 9:00

"Do not be afraid;  
for behold, I proclaim to you good news of great joy  
that will be for all the people. For today in the city of David  
*a Savior has been born for you  
who is Christ and Lord.*

And this will be a sign for you:  
you will find an infant wrapped in swaddling clothes  
and lying in a manger." (Luke 2:10-12)

THE CLERGY AND STAFF OF ST. JANE FRANCES DE CHANTAL PARISH  
WISH YOU A BLESSED AND JOY-FILLED CHRISTMAS.



and 11:00 am. You will tour all classrooms pre-K to grade 8, and meet teachers, students, and parents. Applications for the 2020-21 school year will be available.

## IN OUR ARCHDIOCESE

*For more information on vocations, education, family, youth, social concerns, & other events in the Archdiocese of Washington, visit [www.adw.org](http://www.adw.org). The website also has a media center, which includes social media tools, a YouTube channel, and apps.*

### MEN'S DISCERNMENT RETREAT

The Vocations office of the Archdiocese of Washington invites men in their 20's – 40's, who are interested in learning more about the priesthood, to attend a discernment retreat at Saint John Paul II Seminary, January 31 – February 2, 2020. The retreat will be an opportunity to pray and reflect on God's call, meet priests and seminarians, hear their stories, and learn more about the seminary and priesthood. Registration will open soon at [www.dcpriest.org](http://www.dcpriest.org). If you have any questions, contact the Office of Priest Vocations at [vocations@adw.org](mailto:vocations@adw.org) or 202-636-9020.

## STEWARDSHIP

*When he discovered that Mary was with child,  
Joseph resolved to end their engagement  
with as little disgrace as possible.  
But obedient to the voice of God,  
he changed those plans and became instead  
the protector of the child Jesus and His mother, Mary.  
God grant that I may be as open  
to the leading of the Holy Spirit!*

### PARISH SUPPORT FOR DECEMBER 15, 2019 (\* not including Faith Direct)

<b>* Offertory</b>	<b>\$8,630.00</b>
* December 16, 2018	\$9,556.00

<b>Attendance</b>	<b>1355</b>
December 16, 2018	1322

### POOR BOX: CHRISTMAS

The Poor Box on Christmas and the weekend of December 28/29, will benefit St. Martin's Cloak. In the spirit of St. Martin, who tore his military cloak in half to share with a

beggar, St. Martin's Cloak provides financial and other assistance to those in need, particularly those in our parish. Financial assistance is completely confidential. St. Martin's Cloak partners with various religious and civic organizations in Montgomery County to provide this emergency support.

### TAX DEDUCTIBLE CONTRIBUTIONS

You can deduct your contributions to St. Jane de Chantal only in the year you actually make them. You make a contribution at the time of its unconditional delivery, e.g., in the Sunday collection basket. When a check is mailed, the IRS considers the U.S. Mail postmark to be the delivery date [see IRS Publication 526 and U.S. Treasury Regulation 1-170A-1(b)]. Contributions for the 2019 calendar year must have a U.S. Mail postmark dated no later than December 31, 2019. The date on the check has no consequence. For example, if we receive a check dated December 31, 2019 with a U.S. Mail postmark of January 2, 2020, the contribution will be credited to the 2020 calendar year. Contributions by credit card or bank debit through Faith Direct are deductible in the year you make the charge. Contributions by stock delivered electronically through a financial services firm are considered to be made when the stock is delivered to our broker.

### CHRISTMAS & YEAR-END GIFTS

Faith Direct, our eGiving vendor, makes it easy to make your Christmas gift and year-end contributions, as well as catch-up on missed contributions, to St. Jane de Chantal Parish by credit card or bank debit. Visit <https://membership.faithdirect.net/givenow/30>.

### COMBINED FEDERAL CAMPAIGN # 32653

Please remember the St. Jane de Chantal School Endowment Fund (CFC # 32653) if you participate in this charitable campaign. The campaign season ends January 12, 2020.

5 WAYS TO GIVE	to St. Jane de Chantal Church:	
	<b>ENVELOPES</b> CALL THE PARISH OFFICE TO REQUEST ENVELOPES	<b>RECURRING</b> THROUGH FAITHDIRECT.NET OR YOUR BANK'S BILL PAY
<b>ONLINE</b> VISIT FAITHDIRECT.NET TO MAKE A ONE-TIME GIFT	<b>TEXT-TO-GIVE</b> TEXT \$ AMOUNT TO 301-485-5127	<b>MAIL</b> 9701 OLD GEORGETOWN RD BETHESDA MD 20814-1795



## Do you plan to do any traveling during the Christmas season?

Did you know that with our secure giving program, Faith Direct, your gifts to the parish can be there even when you are away? By supporting St. Jane de Chantal Parish through Faith Direct, both you and our parish can more easily project future contributions. To sign up with Faith Direct through their simple and secure online enrollment process, visit [www.faithdirect.net](http://www.faithdirect.net) and use our church code, MD30.



## THE SOLEMNITY OF THE NATIVITY OF THE LORD

<b>December 24</b>		4:00 pm Vigil Mass (church & Christopher Hall/Gym) 6:00 pm Vigil Mass 8:00 pm Vigil Mass in French (French Parish of St. Louis) 10:00 pm Vigil Mass (musical prelude begins at 9:30 pm)
<b>December 25</b>		9:00 am Mass 11:00 am Mass

### PARISH CALENDAR

Sunday, December 22 – Saturday, December 28, 2019

For all upcoming events, visit [www.stjanedechantal.org](http://www.stjanedechantal.org), "Complete Parish Calendar."

C = Church ♦ CH = Caulfield Hall ♦ CGS = Gathering Space ♦ CLL = Church Lower Lobby  
CRH = Christopher Hall ♦ SMR = Scanlan Meeting Room ♦ DCR = De Chantal Room  
MR = Music Room ♦ NMR = Nalls Meeting Room ♦ RBR = Rectory Board Room  
SCH = School ♦ SC = Seton Center for Religious Education  
AF = Athletic Field ♦ PG = Parish Grounds

**SUNDAY, DECEMBER 22**

**MONDAY, DECEMBER 23**

**TUESDAY, DECEMBER 24**

**WEDNESDAY, DECEMBER 25**

**THURSDAY, DECEMBER 26**

7:00 pm ..... Boy Scout Troop 461 ..... DCR/NMR

**FRIDAY, DECEMBER 27**

**SATURDAY, DECEMBER 28**

### POPE FRANCIS

"Every conversion comes from a previous experience of mercy, from God's tenderness that captures the heart."

@Pontifex

### READINGS

Dec. 29

Reading I  
Sir 3:2-6, 12-14

Reading II  
Col 3:12-15

Gospel  
Mt 2:13-15, 19-23

### INTENTIONS

Sun., Dec. 22 – Sat., Dec. 28

Sunday	8:00 am	Parishioners
	10:00 am	Daniel M. Evans, Jr./D
	12:00 pm	James Maguie/D
	5:00 pm	Donald & Mary Cahill/D
Monday	8:30 am	Cecil Casey/D
Tuesday	8:30 am	
	4:00 pm/C	Agnes McKrisky/D
	4:00 pm/CRH	Margaret Zgombic/D
	6:00 pm	Janette Marchand & Raimundas Matskevicius/D
	10:00 pm	James Murphy/D
Wednesday	9:00 am	Intentions of our parish priests
	11:00 am	Intentions of our parish priests
Thursday	8:30 am	Russ Strand/D
Friday	8:30 am	Robert McDonald/D
Saturday	8:30 am	Denise Brutus/D
	5:00 pm	Teresa J. Doherty/D

### ALTAR SERVERS

Mon., Dec. 23 – Sun., Dec. 29

Monday	8:30 am	C. Johnson, S. Townsend
Tuesday	8:30 am	L. Owens, K. Patterson
	4:00 pm/C	M. Gleeson, R. Gleeson, 1 needed
	4:00 pm/CRH	2 volunteers needed
	6:00 pm	G. & N. Lacount, M. Ojo
	10:00 pm	3 volunteers needed
Wednesday	9:00 am	K. Aquino, L. Varanelli, 1 needed
	11:00 am	L. Deegan, S. Townsend, 1 needed
Thursday	8:30 am	L. Varanelli, 1 needed
Friday	8:30 am	R. Hutko, R. Pablo
Saturday	8:30 am	L. Owens, 1 needed
	5:00 pm	L. Deegan, B. Harman, P. Harman
Sunday	8:00 am	J. Lee, M. Skibo, T. Skibo
	10:00 am	M. Matelis, K. Patterson, S. Pimenta
	12:00 pm	K. Aquino, J. Rivero, P. Rivero
	5:00 pm	S. Miller, N. Sissoko, 1 needed