



**THE ORDER OF WORSHIP
FOR THE FIRST SUNDAY OF ADVENT / YEAR A**

Readings in *Worship* hymnal #1001

ENTRANCE ANTIPHON: PS 25:1-3

To you, I lift up my soul, O my God.
In you, I have trusted;
let me not be put to shame.
Nor let my enemies exult over me;
and let none who hope in you
be put to shame.

READING I: IS 2:1-5

This vision of the coming messianic age has a hopeful focus, in which the Temple Mount in Jerusalem is seen to be the center that draws the nations together and the place from which moral teaching is sent into the whole world. This hopeful, peaceful vision is set in contrast to the dark prediction of the Day of the Lord as a day of judgment in today's Gospel.

PSALM RESPONSE: PS 122

One of the "Songs of Ascent" sung by pilgrims as they approached Jerusalem's Temple Mount. This psalm reflects an idealized picture of Jerusalem as the place of political as well as religious unity.

READING II: ROM 13:11-14

Paul, writing from an early Christian perspective which expected the imminent return of the risen Lord, calls the people to a moral life, using the traditional morality of the the way of light and the way of darkness.

GOSPEL: MT 24:37-44

In this apocalyptic passage, Jesus emphasizes the tradition that the messianic "Son of Man" will arrive to herald the Day of the Lord. Jesus warns of judgment, though he does not offer any reason why "one will be taken and one will be left." His message is simply the need to be prepared: "At an hour you do not expect, the Son of Man will come."

COMMUNION ANTIPHON: PS 85:13

The Lord will bestow his bounty, and our earth shall yield its increase.

Prelude *Wachet auf, ruft uns die Stimme BWV 645* | J. S. Bach (1685 – 1750)
(Sun. 5 pm) *Prepare! Prepare!* | Stephen Pishner (b. 1965)

Entrance Antiphon (Sun. 10 am) *To Thee, O Lord* | Gerald Near (b. 1942)

Entrance Hymn..... *The King Shall Come When Morning Dawns* | #403
(Sun. 5 pm) *O Come, Divine Messiah!* | #387

Penitential Act from *Mass in Honor of Saint Ignatius* | inside hymnal back cover
(Sun. 5 pm) from *Black Mountain Liturgy* | #266

Responsorial Psalm Psalm 122: *Let us go rejoicing* | Luke Mayernik

Let us go re - joic - ing to the house of the Lord.

Refrain © 1969, 1981, 1997, International Commission on English in the Liturgy Corporation.
Music © 2017, Birnamwood Publications, a division of MorningStar Music Publishers, Inc.
All rights reserved. Reprinted under OneLicense.net A-727505.

(Sun. 5 pm) Psalm 122: *Let us go rejoicing* | Michael Joncas

Let us go re - joic - ing to the house of the Lord;

Let us go re - joic - ing to the house of the Lord.

Tune: © 1987, GIA Publications, Inc. Text: © 1987, GIA Publications, Inc.; refrain trans. © 1969, ICEL
All rights reserved. Reprinted under OneLicense.net A-727505.

Gospel Acclamation.....*Alleluia* | Robert Twynham

Al - le - lu - ia, al - le - lu - ia, al - le - lu - ia.

© 1958, World Library Publications. All rights reserved. Reprinted under OneLicense.net A-727505.

(Sun. 5 pm) from *Storrington Mass* | #258

Preparation of the Gifts.....*Lo, How a Rose E'er Blooming* | #438
(Sun. 10 am) *Now Come, Redeemer of Us All* | Michael Praetorius (1571 – 1621)
(Sun. 5 pm) *The King Shall Come When Morning Dawns* | #403

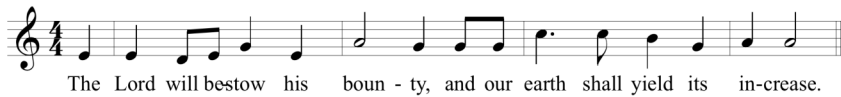
Preface Acclamation..... *Sanctus* from *Cantus Missae* | #304
(Sun. 5 pm) *Holy* from *Mass of Creation* | #365

Memorial Acclamation *Mortem tuam* from *Cantus Missae* | #306
(Sun. 5 pm) *When we eat this bread* from *Mass of Creation* | #366

Great Amen from *Cantus Missae* | #307
(Sun. 5 pm) from *Mass of Creation* | #367

Fraction Rite *Agnus Dei* from *Cantus Missae* | #311
(Sun. 5 pm) *Lamb of God* from *Mass of the Angels and Saints* | #383

Communion Procession.....*The Lord Will Bestow His Bounty* | Russell Weismann



(Sun. 5 pm) *Maranatha, Lord Messiah* | #412

Hymn of Thanksgiving (Sun. 10) *Light and Lyfe Immortal* | Carlton Russell
 (Sun. 5 pm) *The People Who Walk in Darkness* | Mary Louise Bringle (b. 1953)

Marian Antiphon*Alma Redemptoris Mater*



Concluding Hymn.....*People, Look East* | #398
 (Sun. 5 pm) *Soon and Very Soon* | #861

Postlude.....*Wake! Awake!* | Paul Manz (1919 – 2009)

CHORAL TEXTS AND TRANSLATIONS

Now Come, Redeemer of Us All

Now come, Redeemer of us all,
 Now come, thou blessed Redeemer.
 Thou child of a virgin born.
 Mortals over all the earth
 Marvel at thy Holy birth.

Light and Lyfe Immortal

Almyghtye God, geue us grace,
 that we may cast away
 the workes of darknes,
 and put upon us the armour of light,
 now in the tyme of this mortal llyfe,
 (in the whiche thy sonne Jesus Christe
 came to visite us in great humilitie;)
 that in the last daye when he shal
 come again in his glorious maiestyte
 to iudge bothe the quicke and the dead,
 we maye ryse to the lyfe immortal,
 through him who liueth and reigneth
 with thee
 and the holy ghoste now and euer.
 Amen

(Thomas Cranmer, 1489-1556;
 Collect for the First Sunday of Advent)

IN OUR PARISH

*Can't find the bulletin you brought home from church?
 Want to keep up on what's happening in the parish
 even when you are away on vacation or sick in bed?
 Visit our parish website, www.stjanedechantal.org
 to view a copy of the bulletin and for more information
 on parish events and organizations.*

WELCOME NEW PARISHIONERS

St. Jane de Chantal Parish welcomes those who have recently registered in our parish:

- ◆ The William & Gabriela Almy Family
- ◆ Scott O'Neil & Melissa Hancock

If you attend Mass at St. Jane Frances de Chantal regularly, we encourage you to register as a member. Please complete a registration form and drop it in the collection basket when you attend Mass.

SOLEMNITY OF THE IMMACULATE CONCEPTION

Since December 8, falls on the Second Sunday of Advent this year, the Solemnity of the Immaculate Conception of the Blessed Virgin Mary is transferred to Monday, December 9. The obligation to attend Mass, however, does not transfer.

GIVING TREE

The Advent Giving Tree program, coordinated by Sodality, begins this weekend and ends at 5:00 pm on Sunday,

December 15. Each tag hanging on the trees indicates a gift request from one of the charitable organizations that we support. There is a chart on the digital board listing the charities, their mission, and which color/shape tag goes with each charity. Suggestion: After you remove a gift tag, take a photo of the gift number/request so you will have a copy on your cell phone anytime you need it. Please return the new gift in a gift bag with the tag attached, during Masses the weekends of December 7/8, or December 14/15. Please note that gifts should not be left in the church during the week and can no longer be stored in the parish office due to space limits. Giving Tree questions: contact Denise (sintetos@msn.com | 301-807-6199) and Colleen (chadigan@aol.com | 301-564-0368).

SODALITY SPOTLIGHT

Throughout its many years, the John Neumann Unit (JNU) has actively supported Sodality's missions of devotion to the Blessed Mother, charitable works and assistance to the parish, and fellowship and mutual support. Its 17 current members meet as a group four times during the Sodality year and also participate in the projects and events of the General Sodality. During unit meetings members pray the Rosary together, assign responsibilities for General Sodality events, collect financial or in-kind contributions for charities of special interest to the group, and discuss ways in which to further Sodality's goals. This year the unit is especially interested in increasing opportunities within the parish for

the veneration of Mary. The varied charities the JNU has recently supported include the Fisher House Complex at the Walter Reed National Military Medical Center, De Chantal's St. Martin's Cloak Guild, the Gabriel Project of Montgomery County, Right to Life of Montgomery County, and the Misericordia Heart of Mercy program in Chicago, Illinois. The women of the JNU look forward to welcoming new members to their group and to the General Sodality. Come join us!

REMEMBER IN PRAYER

. . . those who are sick, and all those in our nursing homes and hospitals, especially John and Pat Krisko, Pierre Benjamin, Leonard Moreno, and Champa Soyza.

. . . those who have died, Britt Noone and Thomas Fitzgerald.

IN OUR LITURGY & MUSIC MINISTRIES

Visit the Music Ministries page at www.stjanedechantal.org/ministries/music-ministry for information on the many music ensembles at St. Jane.

IN OUR FAITH FORMATION PROGRAMS

Visit the Faith Formation page at www.stjanedechantal.org for information on the various programs, registration forms and calendars.

VOLUNTEERS NEEDED: HALL MONITORS

We are in need of hall monitors during faith formation classes on Tuesday evenings. If interested, contact Mark Diamond at mark.diamond@stjanedechantal.org.

As recently announced in our 2018-2019 Annual Report, the "Forever de Chantal" capital campaign's first phase was launched in the past year. The campaign will add a significant improvement to the athletic capabilities of our 2X Blue Ribbon school, enhance our church's worship space, and modernize our parish social hall.

To help build excitement as we approach the public and pledge phase of the "Forever de Chantal" campaign, St. Jane de Chantal Parish will participate in #iGiveCatholic, our nation's Catholic day of giving, on #Giving Tuesday, December 3! A significant portion of the "Forever de Chantal" campaign, \$2.4 million, will fund improving outdoor spaces for both parish and school, including a new turf field.

This special day of giving will allow current and former parishioners, school families, and friends of St. Jane Frances de Chantal to come together as faithful stewards to add to what we have inherited and leave a lasting gift to those who will join us and those who will follow us.



IN OUR BLUE RIBBON SCHOOL

Check out the St. Jane de Chantal School website at www.dechantal.org to get information on admissions, see what each classroom is studying, and more.

IN OUR ARCHDIOCESE

For more information on vocations, education, family, youth, social concerns, & other events in the Archdiocese of Washington, visit www.adw.org. The website also has a media center, which includes social media tools, a YouTube channel, and apps.

INTRODUCTORY NATURAL FAMILY PLANNING CLASS

Couples will learn about the science behind Natural Family Planning and the different methods they can use in an introductory class which is offered on three dates: December 14, March 7, and June 27 from 10:00 am – 12:00 noon, at Catholic Charities (12247 Georgia Avenue, Room 301, Silver Spring). You only need to attend one of these dates. Fee: \$ 20.00; materials are included. Register at <https://adwnfp101.eventbrite.com>. For more information, contact the archdiocesan Office for Family Life at 301-853-4546 or visiblesign@adw.org.

CHRISTMAS DINNER FOR THOSE ALONE & IN NEED

The Basilica of the National Shrine of the Immaculate Conception will provide meals for hundreds of poor, homeless, elderly, and needy individuals living in the District of Columbia and surrounding areas on Christmas Day. More than 800 Christmas dinners are served each year in the National Shrine Cafeteria and another 800 are delivered to shut-ins. Volunteers are needed to fill many different positions. If you are able to help, either at the

#iGIVECATHOLIC
#GIVINGTUESDAY

WHEN?

December 3 12:00 AM to 11:59 PM CST

HOW?

Visit iGiveCatholic.org and search for "St. Jane Frances de Chantal Parish" in the "Parish, School, or Not-for-Profit" search box.

WHY?

Every one-time gift of \$25 or more will make a meaningful difference in reaching our \$2.4 million goal for a durable and safer field for our children and parishioners to use for games and recreation.

Basilica or by delivering meals, visit www.nationalshrine.com/christmasdinner for a link to online registration. If you have questions, before the event e-mail visitorservices@bnsic.org or call 202-526-8300, ext. 111.

HELP OUR MARRIAGE

Do you feel alone? Do you argue, or have you just stopped talking to each other? Does talking about it only make it worse? Retrouvaille (pronounced retro-vi with a long i) helps couples through difficult times in their marriages. This program has helped many couples experiencing difficulties in their marriage. For confidential information or to register for the upcoming program beginning with a weekend on January 24-26, 2020, visit: www.HelpOurMarriage.org, call (443) 400-7017, or email: 3015@retrouvaille.org.

MEN'S DISCERNMENT RETREAT

The Vocations office of the Archdiocese of Washington invites men in their 20's – 40's, who are interested in learning more about the priesthood, to attend a discernment retreat at Saint John Paul II Seminary, January 31 – February 2. The retreat will be an opportunity to pray and reflect on God's call, meet priests and seminarians, hear their stories, and learn more about the seminary and priesthood. Registration will open soon at www.dcpriest.org. If you have any questions, contact the Office of Priest Vocations at vocations@adw.org or 202-636-9020.

CATHOLIC CHARITIES TAX ASSISTANCE PROGRAM

Do you use Turbo Tax? If yes, hundreds of low-income families need your help this coming "tax season." Every year the Catholic Charities' VITA tax assistance program assists struggling parents with their tax returns, maximizing their refunds to help them achieve financial stability. But we need your help to make sure more families claim their well-deserved Earned Income and Child tax credits. We only ask for eight hours of your time over the course of two Saturdays in February, March and the first half of April. Training classes will be provided in January. For more

information, contact call Deacon Jim Shanahan at 202-772-4310 or Jim.Shanahan@cc-dc.org.

HOPE AFTER ABORTION

Having unresolved feelings about your abortion experience? Come to an Entering Canaan Day of Prayer and Healing, Saturday, April 25, 9:00 am to 5:30 pm. To register, contact Project Rachel Ministry at 301-982-2008 or hope@adw.org. Location and contacts are confidential due to the personal nature of this experience.

STEWARDSHIP

The Son of Man will come at an hour you do not expect. Good stewards know that they are accountable to God for all they have and are, and they strive to live in readiness for His coming.

SECOND COLLECTION: MAINTENANCE

The second collection this weekend, November 30/ December 1, is our monthly collection to help with the repair and maintenance of our parish facilities.

SECOND COLLECTION: RETIRED RELIGIOUS

The second collection next weekend, December 7/8, will benefit the Retirement Fund for Religious, which helps hundreds of religious communities care for aging members. Please join in thanking the thousands of senior Catholic sisters, brothers, and religious order priests who worked tirelessly to educate the young and serve those in need.

POOR BOX

The Poor Box next weekend, December 7/8, will benefit Bethesda Help, which provides food, transportation, clothing referrals, emergency financial assistance, and information on other county resources to residents of greater Bethesda. For more information, visit www.bethesdahelp.org.

Please remember the St. Jane de Chantal School Endowment Fund if you participate in this charitable campaign. The campaign season ends January 12, 2020.



32653

5 WAYS TO GIVE to St. Jane de Chantal Church:

ENVELOPES CALL THE PARISH OFFICE TO REQUEST ENVELOPES	RECURRING THROUGH FAITHDIRECT.NET OR YOUR BANK'S BILL PAY
ONLINE VISIT FAITHDIRECT.NET TO MAKE A ONE-TIME GIFT	TEXT-TO-GIVE TEXT \$ AMOUNT TO 301-485-5127
MAIL 9701 OLD GEORGETOWN RD BETHESDA MD 20814-1795	



Do you plan to do any traveling during the Advent or Christmas season?

Did you know that with our secure giving program, Faith Direct, your gifts to the parish can be there even when you are away? By supporting St. Jane de Chantal Parish through Faith Direct, both you and our parish can more easily project future contributions. To sign up with Faith Direct through their simple and secure online enrollment process, visit www.faithdirect.net and use our church code, MD30.

Sunday, December 1 – Saturday, December 7, 2019
For all upcoming events, visit www.stjanedechantal.org, click on "Complete Parish Calendar."

PARISH CALENDAR

C = Church ♦ CH = Caulfield Hall ♦ CGS = Gathering Space ♦ CLL = Church Lower Lobby
CRH = Christopher Hall ♦ SMR = Scanlan Meeting Room ♦ DCR = De Chantal Room
MR = Music Room ♦ NMR = Nalls Meeting Room ♦ RBR = Rectory Board Room
SCH = School ♦ SC = Seton Center for Religious Education
AF = Athletic Field ♦ PG = Parish Grounds

SUNDAY, DECEMBER 1

at all Masses Sodality Giving Tree begins CGS
10:00 am CCD: FOOT SMR
10:00 am CCD: Kindergarten CH
12:00 & 1:30 pm Advent Wreath Workshop CH
6:00 pm Youth Ministry SMASH SC

MONDAY, DECEMBER 2

9:30 pm School Christmas Play Practice C
7:00 pm Boy Scout Troop 461 Leadership NMR
7:00 pm Venturing Crew 461 DCR

TUESDAY, DECEMBER 3

9:30 am School Christmas Play Practice C
6:00 pm CCD: Grades 1-8 SCH
7:00 pm Scripture Study: Acts SC

WEDNESDAY, DECEMBER 4

9:15 am School Christmas Play Practice C
9:30 am School Pre-K CH
3:00 pm School Dance Class CH
6:00 pm Cub Scout Pack 461 DCR/NMR
6:30 pm Contemporary Ensemble MR
7:00 pm Sodality Mass & Investiture C
7:30 pm Sodality General Meeting & Christmas Craft CH

THURSDAY, DECEMBER 5

9:00 am Scripture Study: Acts SC
9:15 am School Christmas Play Practice C
9:30 am School Pre-K CH
5:00 pm Girl Scout Brownie Troop 34053 (Grade 2) DCR
7:00 pm Boy Scout Troop 461 DCR/NMR
7:30 pm Choir MR
7:30 pm Green Committee SMR

FRIDAY, DECEMBER 6

7:30 pm School Band Concert CRH

SATURDAY, DECEMBER 7

6:30 pm Men's First Saturday Fellowship CH
9:00 am SPRED Prayer Service Rock Creek Manor

POPE FRANCIS

"It always strikes a cord when we think about the hours which precede a great disaster: everyone is calm, and they go about their usual business without realizing that their lives are about to be turned upside down. Of course, the Gospel does not want to scare us, but to open our horizons to another, greater dimension, one which, on the one hand puts into perspective everyday things, while at the same time making them precious, crucial. The relationship with the God-who-comes-to-visit-us gives every gesture, every thing a different light, a substance, a symbolic value."

Pope Francis, *homily*,
27 November 2016,
Saint Peter's Square.

READINGS Dec. 8

Reading I
Is 11:1-10
Reading II
Rom 15:4-9
Gospel
Mt 3:1-12

INTENTIONS

Sun., Dec. 1 – Sat., Dec. 7

Sunday	8:00 am	Parishioners
	10:00 am	August Rump/D
	12:00 pm	Genevieve Leone/D
	5:00 pm	W.R./L
Monday	8:30 am	Maurice Coleman/D
Tuesday	8:30 am	Patrick & Ghislaine Guimbeau/D
Wednesday	8:30 am	Jeanne Vass/D
Thursday	8:30 am	Alfredo & Ana Amy/D
Friday	8:30 am	Rosa Kim/L
Saturday	8:30 am	Maria Guth/L
	5:00 pm	Teresa J. DohertyD

ALTAR SERVERS

Mon., Dec. 2 – Sun., Dec. 8

Monday	8:30 am
Tuesday	8:30 am
Wednesday	8:30 am
Thursday	8:30 am
Friday	8:30 am
Saturday	8:30 am
	5:00 pm
Sunday	8:00 am
	10:00 am
	12:00 pm
	5:00 pm

*View current schedule
online through
the Ministry Scheduler.*